

**SUBDIVISION PLAN OF LOT A SEC. 23 TP. 26
O.D.Y.D. PLAN EPP56593**

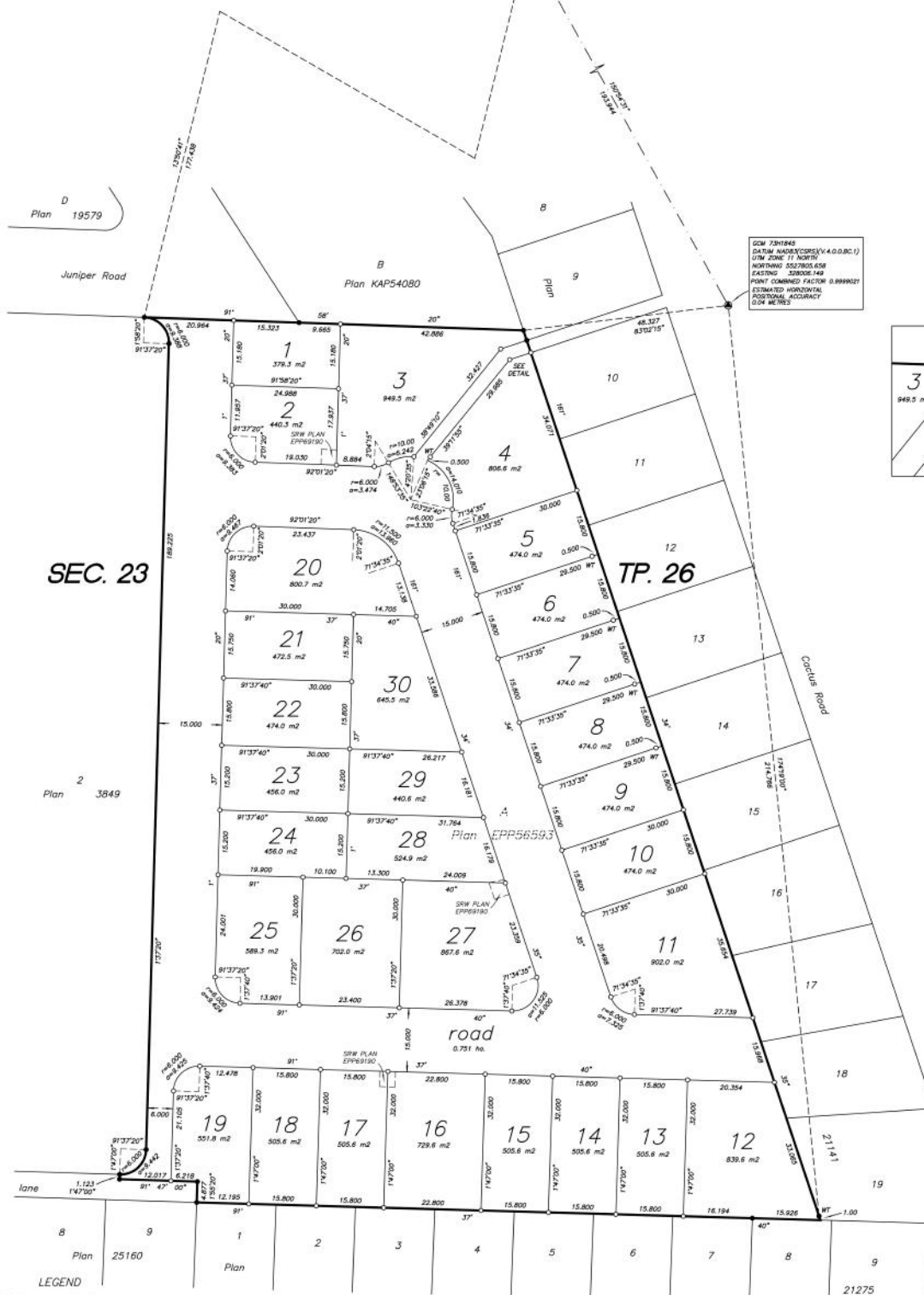
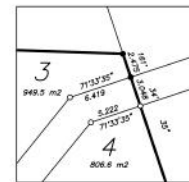
PLAN EPP56713

BCGS 82E.084

10 5 0 10 20 30 40 50 METRES
The intended size of this plan is 560 mm in width by 864 mm in height (D size) when plotted at a scale of 1:500.

GM 731846
DATUM NAD83(CRS) (V.4.0.0.BC.1)
UTM ZONE 11 NORTH
NORTHING 5527975.119
EASTING 327811.862
POINT COMBINED FACTOR 0.9999339
ESTIMATED HORIZONTAL
POSITIONAL ACCURACY
0.5M METRES

GM 731845
DATUM NAD83(CRS) (V.4.0.0.BC.1)
UTM ZONE 11 NORTH
NORTHING 5527825.638
EASTING 328062.148
POINT COMBINED FACTOR 0.9999027
ESTIMATED HORIZONTAL
POSITIONAL ACCURACY
0.5M METRES



LEGEND
All distances are in metres.
● Iron Post Found
○ Iron Post Set
⊙ Control Monument Found
WT Witness

This plan shows witness posts that are not set on the true corner.
Grid bearings are derived from observations between control monuments 731845 and 731846.
Integrated survey area No. 4, Kelowna, NAD83 CRS V.4.0.0.BC.1.

This plan shows horizontal ground-level distances except where otherwise noted. To compute grid distances, multiply ground-level distances by average combined factor 0.9999225, which has been derived from control monuments 731845 and 731846.
The UTM coordinates and estimated horizontal positional accuracy achieved are derived from the MASCO published coordinates and standard deviations for geodetic control monuments 731845 and 731846.

**NOTE: Legal Lot Numbers
DO NOT match
Marketing Site Plan
Lot/Home Numbers**

This plan lies within the jurisdiction of the approving authority for the City of Kelowna.
This plan lies within the Central Okanagan Regional District.
The field survey represented by this plan was completed on the 27th day of April, 2017.
Douglas A. Goddard, BCLS 588.

16667 EPP56713 SUB2 fb 373
D.A. Goddard Land Surveying Inc.
103-138 ST. PAUL STREET KELOWNA PHONE 250-763-3733